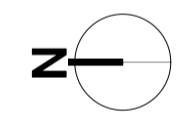
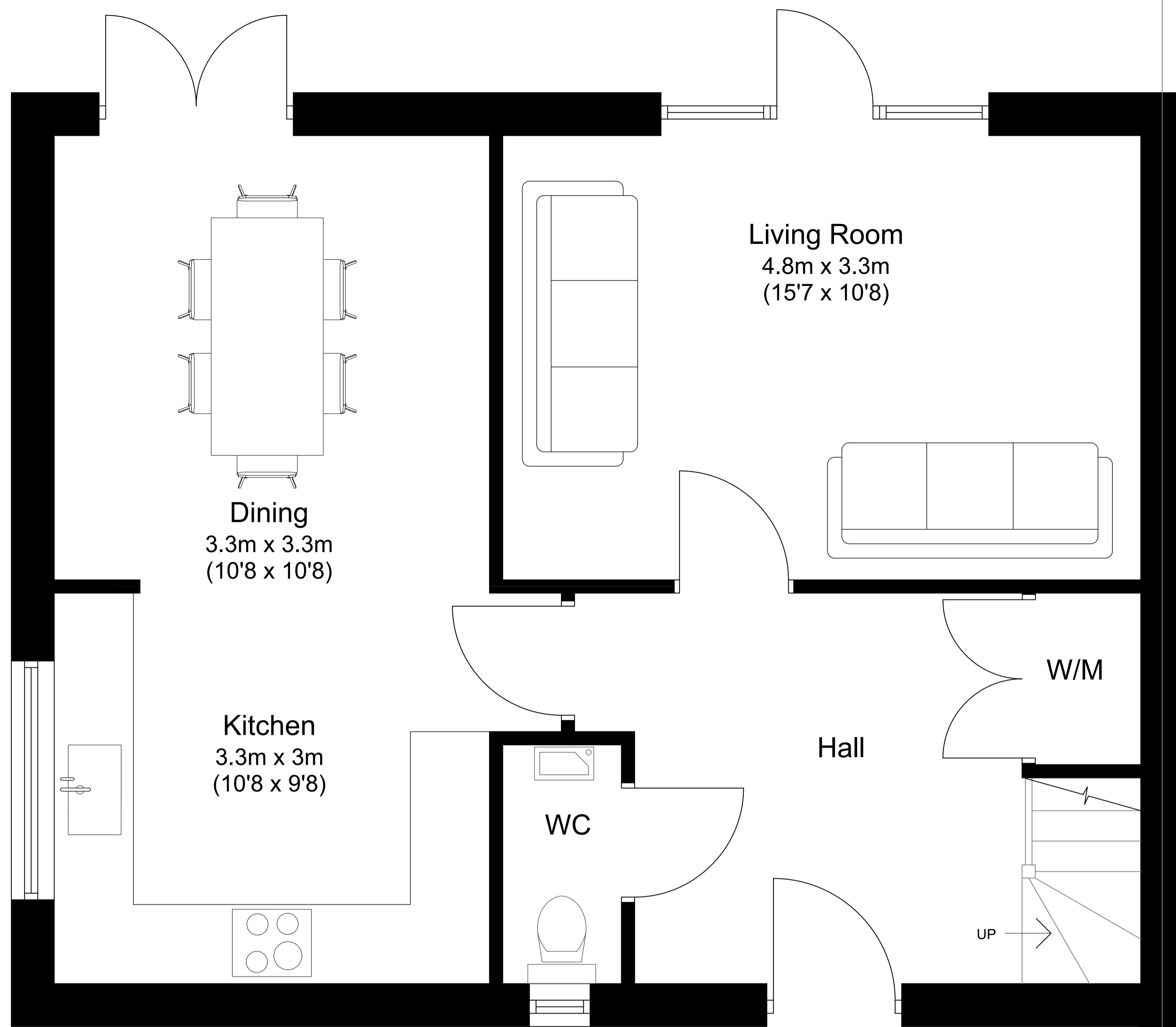
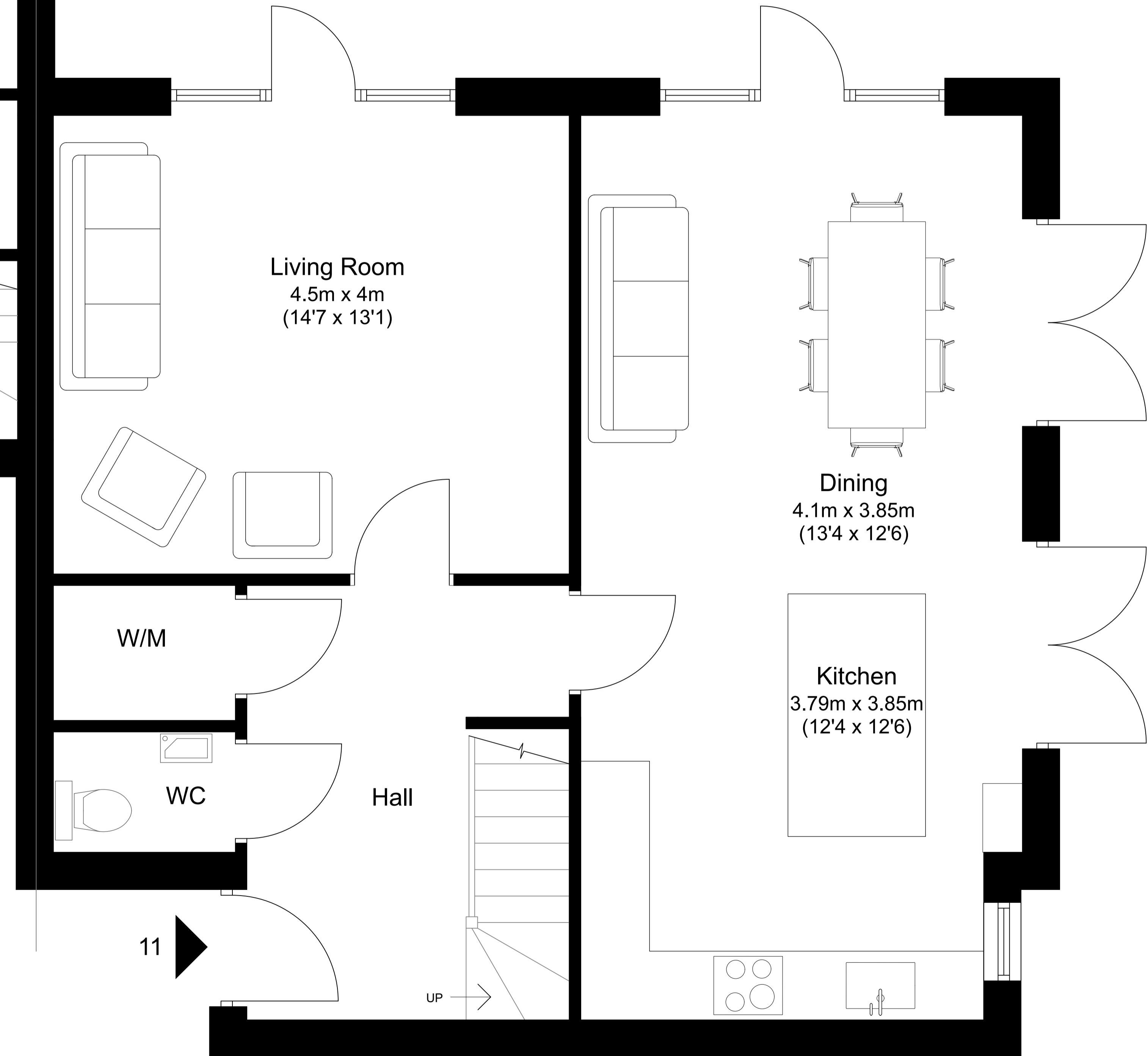


Plot 11 - Hillside House Plot 12 - The Highfield House Ground Floor



PLOT 12 - GROUND FLOOR
APPROX GROSS AREA
52 sqm / 560

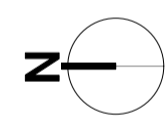
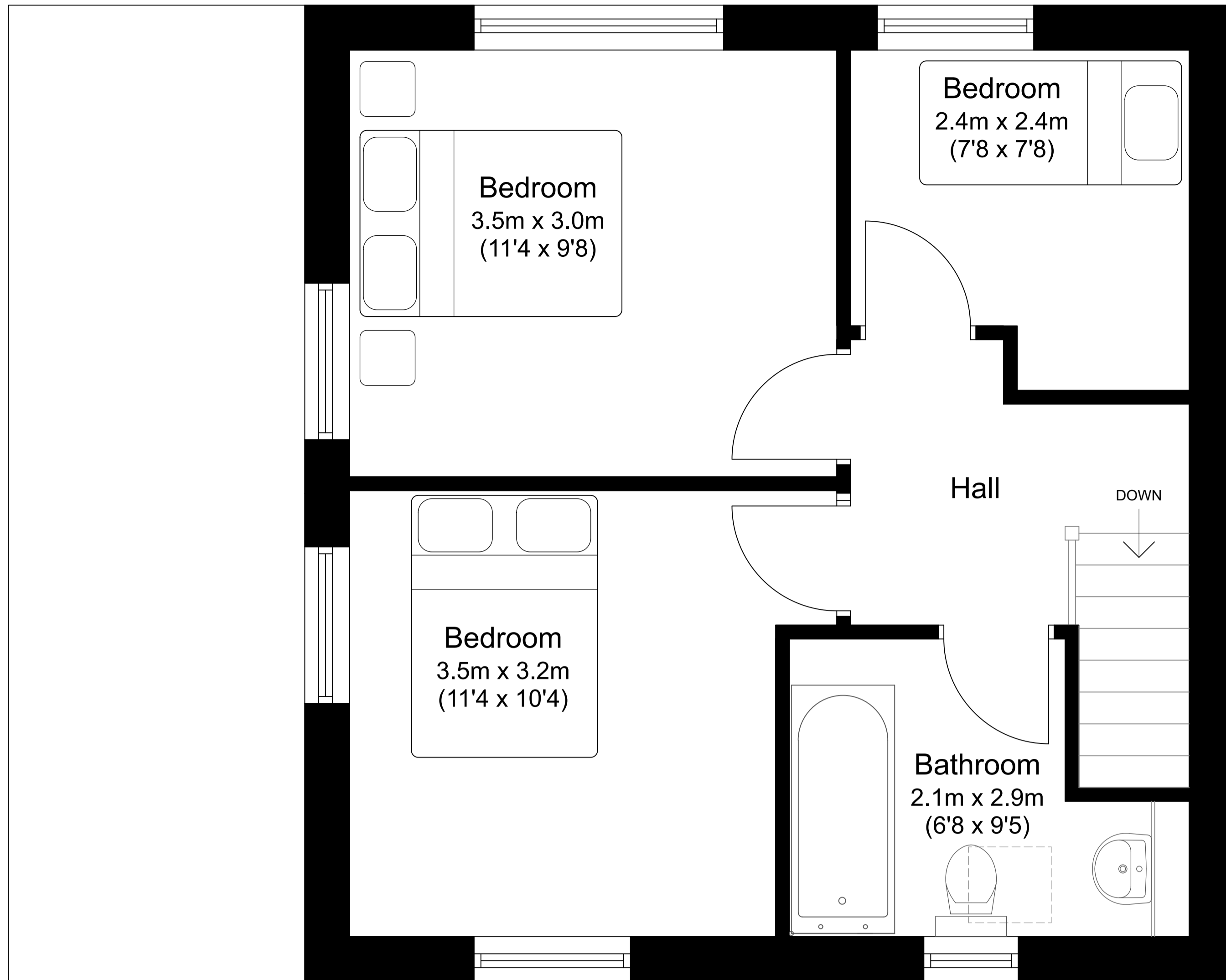
12



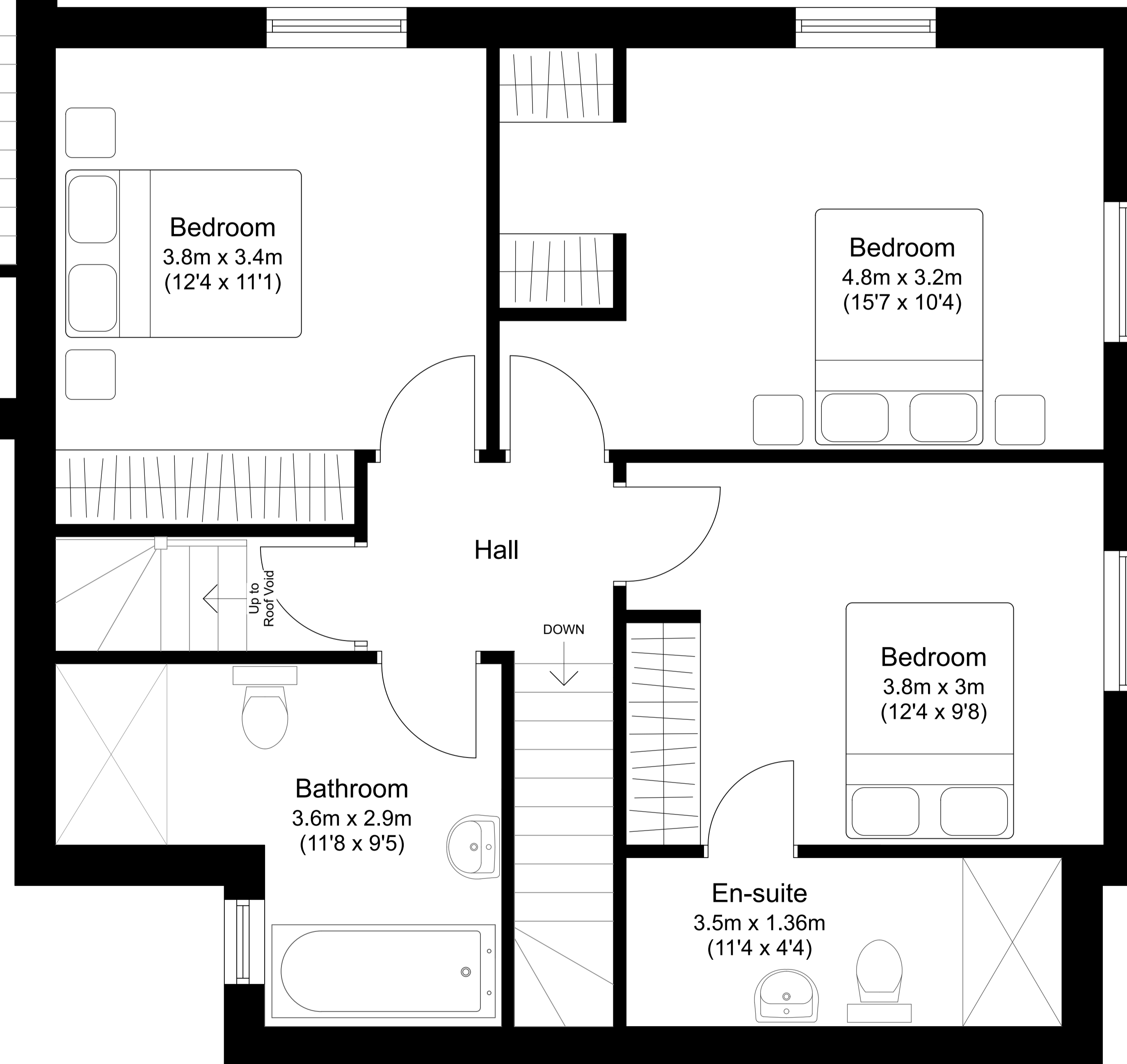
PLOT 11 - GROUND FLOOR
APPROX GROSS AREA
63 sqm / 678 sqft

11

Plot 11 - Hillside House
Plot 12 - The Highfield House
First Floor



PLOT 12 - FIRST FLOOR
APPROX GROSS AREA
39 sqm / 420 sqft



PLOT 11 - FIRST FLOOR
APPROX GROSS AREA
63 sqm / 678 sqft