

# DION

H O M E S

---

BYARDS CROFT,  
STREATHAM,  
SW16 5HX



# Welcome Home

Your dream home awaits at Byards Croft, an elegant new development in the upcoming area of Streatham. This exclusive collection of contemporary homes combines modern design with timeless comfort, perfectly suited for family living or city professionals seeking a peaceful retreat. Ideally located within easy reach of Streatham Common and just moments from Streatham and Streatham Hill stations, you'll enjoy effortless connections into central London while being surrounded by green open spaces and a vibrant local community. Each home at Byards Croft has been crafted to the highest specification, featuring spacious interiors, landscaped gardens, and private parking — creating the perfect balance of style, convenience, and comfort.



# Love Streatham

Vibrant, well-connected, and full of character, Streatham offers the best of both worlds — urban convenience and leafy tranquility. With its wide, tree-lined streets, charming period homes, and thriving community spirit, it's easy to see why this South London neighbourhood continues to attract professionals, families, and first-time buyers alike.



Residents enjoy an abundance of green spaces, including the beautiful Streatham Common, complete with woodlands, a café, and the famous Rookery Gardens.

For leisure and wellness, the Streatham Ice and Leisure Centre and Tooting Bec Lido are close by, while independent cafés, boutique shops, and restaurants give the area its distinct local flavour.



Transport links are exceptional — Streatham, Streatham Hill, and Streatham Common stations provide fast connections into London Victoria, London Bridge, and Blackfriars, making it ideal for commuters.

Families benefit from an excellent selection of schools, both state and independent, with several rated 'Outstanding' by Ofsted.

Blending a relaxed village feel with the energy of city living, Streatham is a place where community thrives and everyday life feels effortlessly balanced.



# Tranquility



# Where food is made with love...

## Specification

---

### **Kitchen**

- Bosch Appliances
- Handleless Kitchen
- Award winning Eton style
- Integrated fridge/ freezer
- Washer Dryer machine
- Integrated dishwasher
- Built in oven, hob and hood
- Quartz worktop and splashback

### **Bathroom**

- Sanex - White sanitary
- JTP taps and showers
- Vanity cabinets
- Heated towel radiator to all

### **Internal finishes**

- Luxury Amtico flooring ground
- Victoria carpet provided
- Under floor heating
- Samsung heat pump
- EPC: Energy Rating B

### **Exterior**

- Turfed rear garden
- External lighting
- External water tap
- Allocated parking spaces
- Private garden

### **Security**

- Fire door
- Fully integrated smoke detectors
- Windows fitted with locks

### **Miscellaneous**

- 10 Year Build Zone Warranty
- 2 Year Customer Care





# Delight in detail

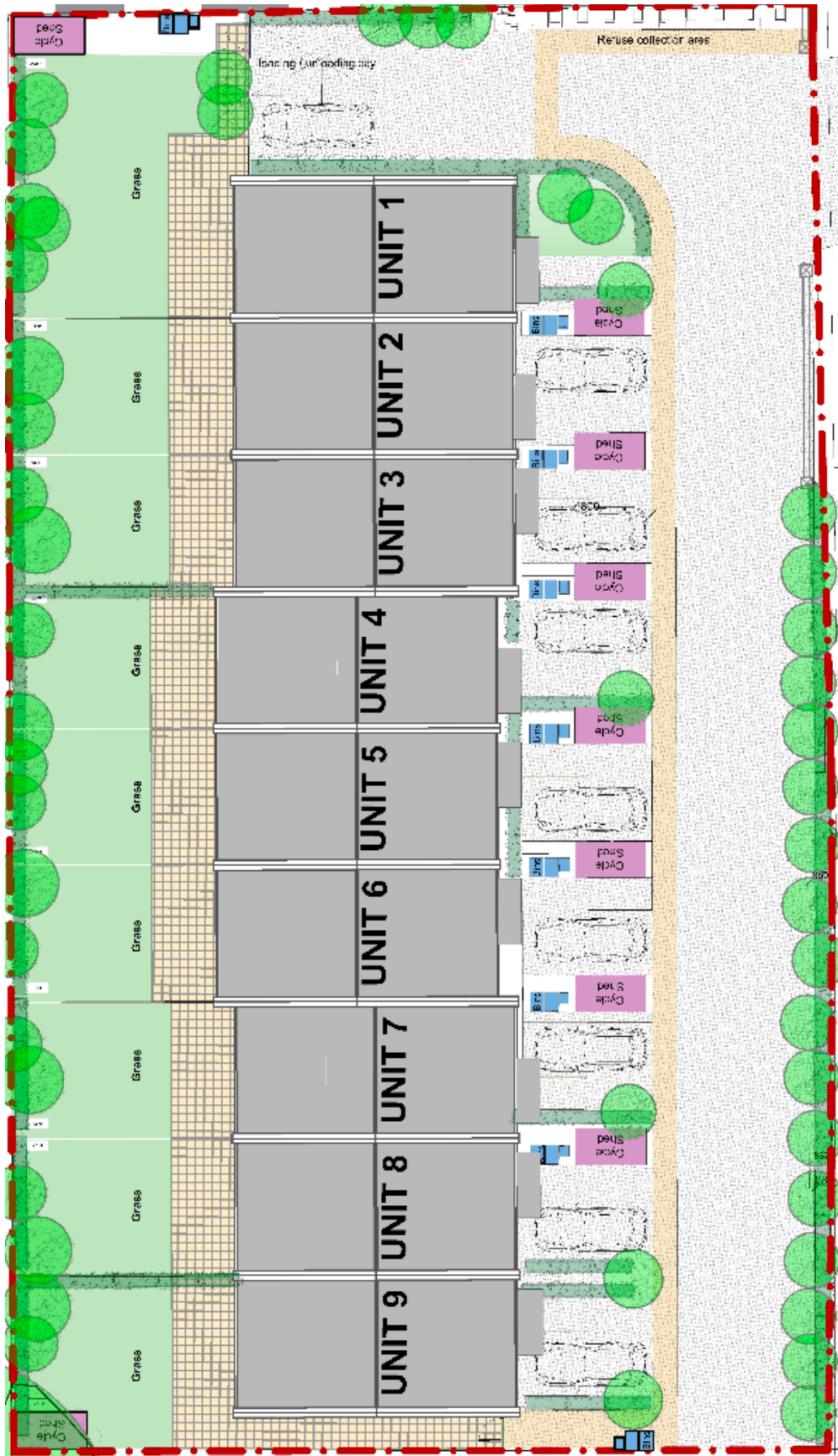
We are obsessed in the detail , quality and craftsmanship of what we create. We are not just another property property developer, we are a boutique home for young families who trust us to meet their exact expectations.



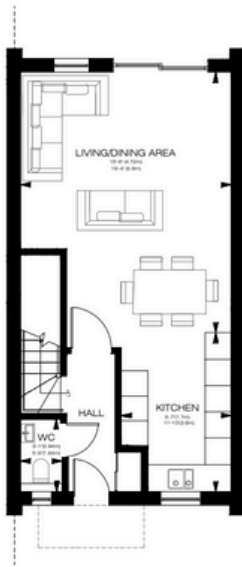


# Escapism through elegance



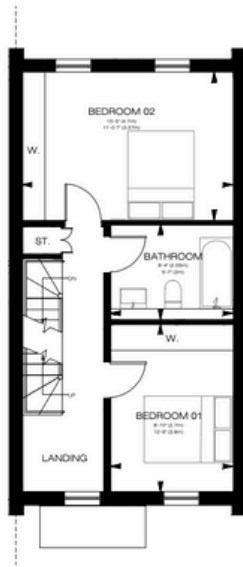


## BYARDS CROFT



**UNIT 1  
GROUND FLOOR**

43.1m<sup>2</sup>  
463.93ft<sup>2</sup>



**UNIT 1  
FIRST FLOOR**

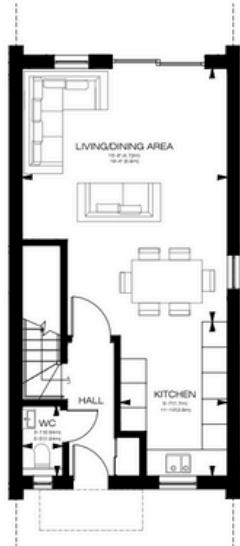
43.1m<sup>2</sup>  
463.93ft<sup>2</sup>



**UNIT 1  
SECOND FLOOR**

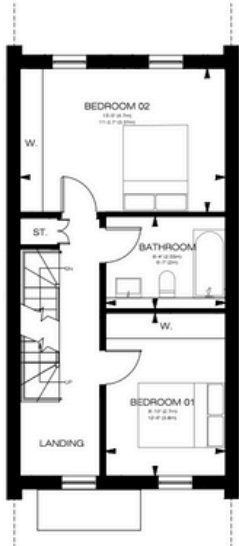
30.73m<sup>2</sup>  
330.78ft<sup>2</sup>

Plot 1	116.93 sqm 1258.62 sqft
--------	----------------------------



**UNIT 2  
GROUND FLOOR**

43.1m<sup>2</sup>  
463.93ft<sup>2</sup>



**UNIT 2  
FIRST FLOOR**

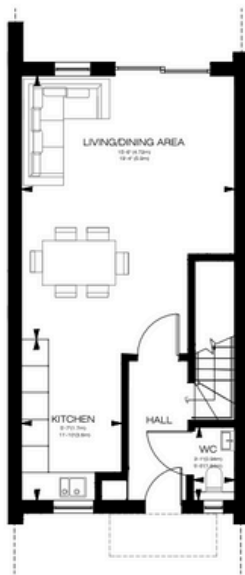
43.1m<sup>2</sup>  
463.93ft<sup>2</sup>



**UNIT 2  
SECOND FLOOR**

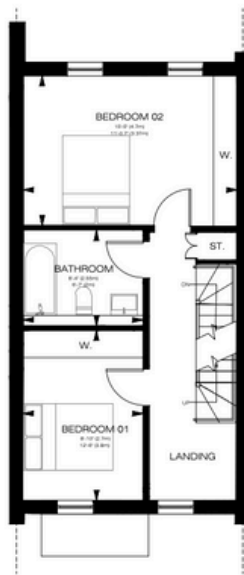
30.73m<sup>2</sup>  
330.78ft<sup>2</sup>

Plot 2	116.93 sqm 1258.62 sqft
--------	----------------------------



**UNIT 3  
GROUND FLOOR**

43.1m<sup>2</sup>  
463.93ft<sup>2</sup>



**UNIT 3  
FIRST FLOOR**

43.1m<sup>2</sup>  
463.93ft<sup>2</sup>

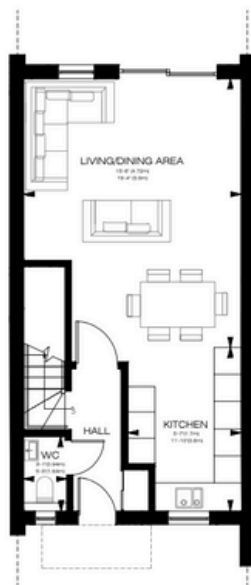


**UNIT 3  
SECOND FLOOR**

30.73<sup>2</sup>  
330.78ft<sup>2</sup>

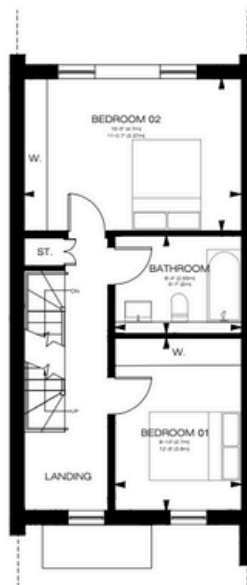
**Plot 3**

116.93 sqm  
1258.62 sqft



**UNIT 4  
GROUND FLOOR**

43.1m<sup>2</sup>  
463.93ft<sup>2</sup>



**UNIT 4  
FIRST FLOOR**

43.1m<sup>2</sup>  
463.93ft<sup>2</sup>

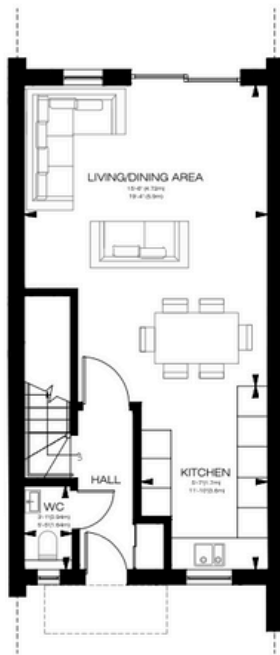


**UNIT 4  
SECOND FLOOR**

35.06m<sup>2</sup>  
377.38ft<sup>2</sup>

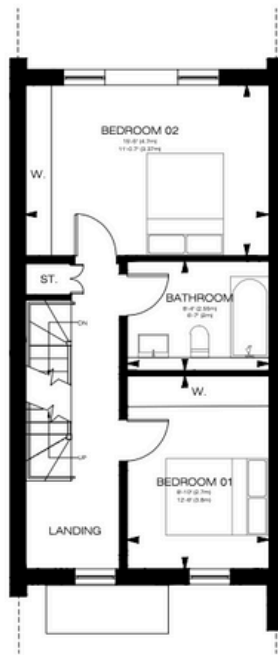
**Plot 4**

121.26 sqm  
1305.23 sqft



**UNIT 5  
GROUND FLOOR**

43.1m<sup>2</sup>  
463.93ft<sup>2</sup>



**UNIT 5  
FIRST FLOOR**

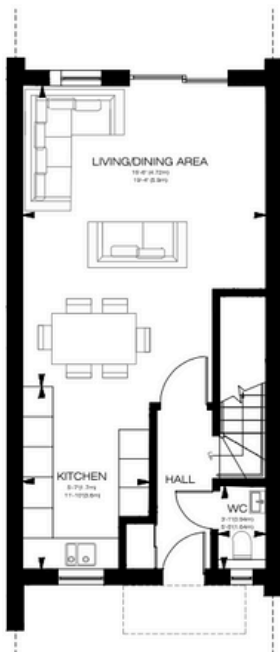
43.1m<sup>2</sup>



**UNIT 5  
SECOND FLOOR**

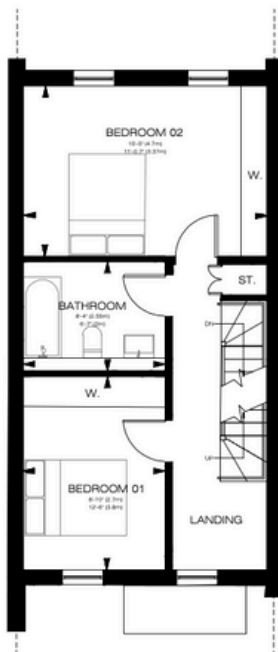
35.06m<sup>2</sup>  
377.38ft<sup>2</sup>

Plot 5	121.26 sqm
	1305.23 sqft



**UNIT 6  
GROUND FLOOR**

43.1m<sup>2</sup>  
463.93ft<sup>2</sup>

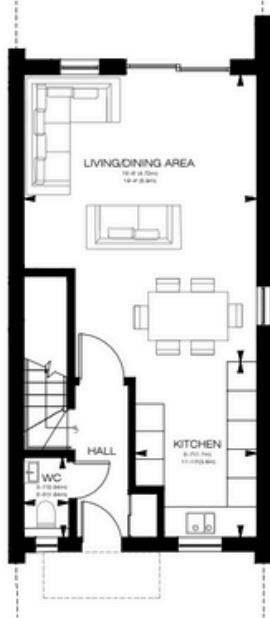


Plot 6	121.26 sqm
	1305.23 sqft



**UNIT 6  
SECOND FLOOR**

35.06m<sup>2</sup>  
377.38ft<sup>2</sup>



**UNIT 7  
GROUND FLOOR**

43.1m<sup>2</sup>  
463.93ft<sup>2</sup>



**UNIT 7  
FIRST FLOOR**

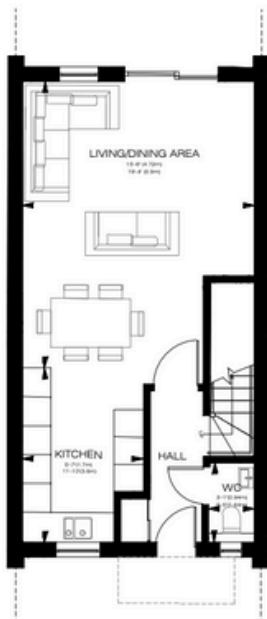
43.1m<sup>2</sup>  
463.93ft<sup>2</sup>



**UNIT 7  
SECOND FLOOR**

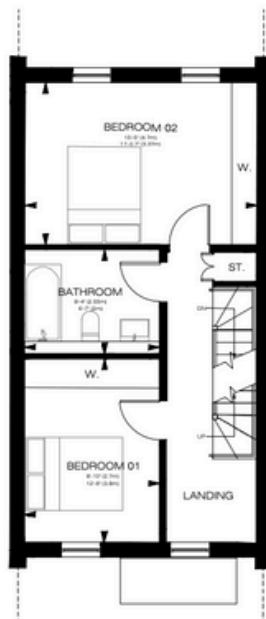
30.73m<sup>2</sup>  
330.78ft<sup>2</sup>

<b>Plot 7</b>	116.93 sqm 1258.62 sqft
---------------	----------------------------



**UNIT 8  
GROUND FLOOR**

43.1m<sup>2</sup>  
463.93ft<sup>2</sup>



**UNIT 8  
FIRST FLOOR**

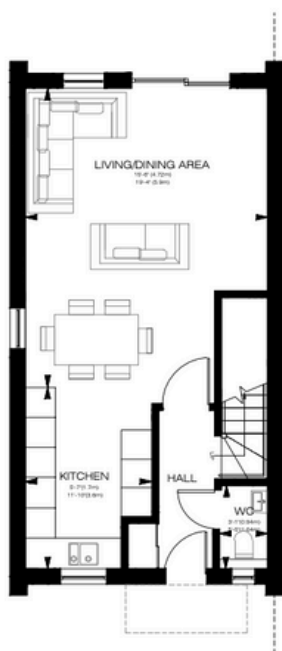
43.1m<sup>2</sup>  
463.93ft<sup>2</sup>



**UNIT 8  
SECOND FLOOR**

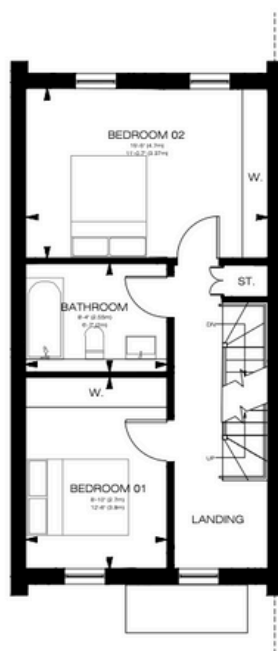
30.73m<sup>2</sup>  
330.78ft<sup>2</sup>

<b>Plot 8</b>	116.93 sqm 1258.62 sqft
---------------	----------------------------



**UNIT 9  
GROUND FLOOR**

43.1m<sup>2</sup>  
463.93ft<sup>2</sup>



**UNIT 9  
FIRST FLOOR**

43.1m<sup>2</sup>  
463.93ft<sup>2</sup>

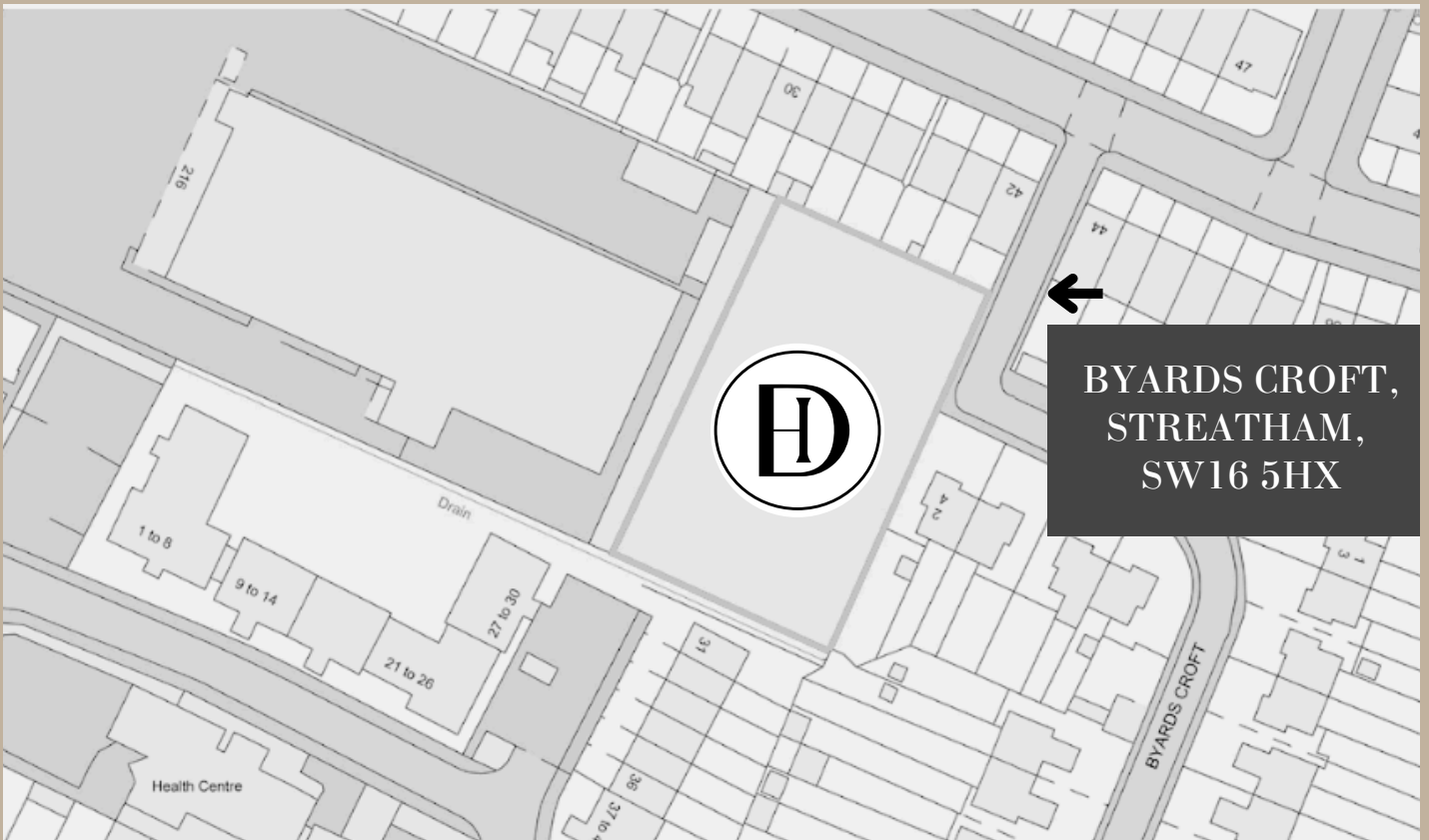


**UNIT 9  
SECOND FLOOR**

30.62m<sup>2</sup>  
329.59ft<sup>2</sup>

Plot 9	116.82 sqm 1257.44 sqft
--------	----------------------------

## How to find us



## Contact details:

+44 203 633652  
[info@dionhomes.co.uk](mailto:info@dionhomes.co.uk)  
[www.dionhomes.co.uk](http://www.dionhomes.co.uk)

## Why buy a DION Home?



### Craftsmanship

From the materials we choose to the tradesmen we employ, every step of our process is centered around craftsmanship of the highest standard.



### Service

We aim to make the process as easy as possible with the help of our dedicated team who are there to help you through every step of the process.



### Experience

With years of experience in the housing industry, our extensive knowledge and the needs of our buyers remains at heart of our work.

## Customer care

From the first day you visit one of our sales centres to the day you move in, we aim to provide you a level of service and after-sales care that is second to none. We provide a Comprehensive information pack that details the work aspects of a new home. A 10 year Warranty with Build Zone provides a further piece of mind. We are confident that our approach to building and selling new homes coupled with our Customer Care programme will provide you with many years of enjoyment in your new home.



**We provide 10 year Build Zone Warranty.**

DION  
HOMES

Your NEW home,  
just how YOU'VE  
DREAMT IT.



---

Thank you for choosing us



For more info;  
+44 203 633652  
[info@dionhomes.co.uk](mailto:info@dionhomes.co.uk)  
[www.dionhomes.co.uk](http://www.dionhomes.co.uk)